



# UC GUIDE

zoomrooms



# Contents

Introduction .....	05
Zoom Rooms Licensing .....	05
Zoom Hardware .....	26
Crestron Zoom Rooms solutions .....	27
Poly Zoom Rooms solutions .....	44
Logitech Zoom Rooms solutions .....	76
DTEN Zoom Rooms solutions .....	86
Neat Zoom Rooms solutions .....	98



## Zoom Rooms Licensing

## What are Zoom Rooms?

The modern workspaces for hybrid teams, Zoom Rooms bring HD video collaboration into any space - in the office, in the classroom or at home - and enable in-person and remote participants to interact in real time. Simple to start a meeting, book a room and share content, Zoom Rooms are the conference room experience you've always wanted.

- > Zoom Rooms runs on the same backend that brings reliable high-quality video to Zoom clients
- > Built from scratch from Room-to-Remote experience in the cloud
- > Designed for bandwidth efficiency
- > High feature velocity
- > Multi-functional space beyond just video conferencing
- > Built from the ground up to easily meet with participants across mobile, desktop, and other rooms



Zoom Meeting on Desktop



Zoom Meeting on Mobile



Zoom Meeting from a Training Room



Zoom Meeting from a Huddle Room

Zoom Meeting on Mobile

## Zoom Rooms Core Features

### HD Video and Audio

High quality video, audio, and web conferencing in any sized room with off-the-shelf hardware

### Wireless Sharing

Present content wirelessly from your laptop or mobile device, Intelligent Proximity to start sharing with one click

### One Touch to Meet or Reserve Room

Start an instant meeting or integrate with your calendaring system

### Enterprise Remote Management

Dashboard and alerts for scalable management  
Group by location or room type for IT assignment



## Zoom Rooms Core Features

- > One-tap to start an instant or scheduled meeting (including 3rd party meetings)
- > Room-to-room calling
- > Room-to-contact calling
- > Room to telephone calling
- > Room to SIP / H.323 calling
- > Microsoft Teams Direct Guest Join



## Delivering a complete room experience

**A single Zoom Rooms license includes the following value-added services at no additional cost:**

### Digital Signage

Utilise an unlimited number of in-room or standalone displays for corporate communications, internal marketing, and more across multiple offices and departments.

### Scheduling Display

End scheduling headaches with a beautiful display that provides room availability, check-in for utilisation management, and capabilities to book a meeting for any available time of that day.

### Zoom Rooms for Touch

Make interactive collaboration easy with touch screen displays.



# Multi-share allows simultaneous screen share in rooms



## Hot Desking



Smart Gallery feature leverages AI to take a single-camera view of multiple people in a Zoom Room, and send up to three unique video streams to better display the in-room participants to remote attendees. Remote Attendees get an improved face-to-face experience and interaction with Zoom Rooms participants.

With Zoom Hot Desking, employees will be able to book desks and spaces using an interactive map and eventually select seats or arrangements recommended by Zoom's AI, giving organisations the ability to reconfigure their workspaces for flexible working. (Coming Soon)





## Voice Commands for Zoom Rooms

With Voice Commands integrated directly into Zoom Rooms controllers, you can start a meeting in a Zoom Room with voice commands. Upon entering a meeting room, attendees can start a meeting by simply saying "Hello Zoom, start meeting."

Alexa for Businesses is also available on Zoom Rooms Appliances later this year (subject to change), providing additional abilities, like "Alexa, find me an available meeting room."



## Persistent Whiteboarding & Zoom Rooms for Touch



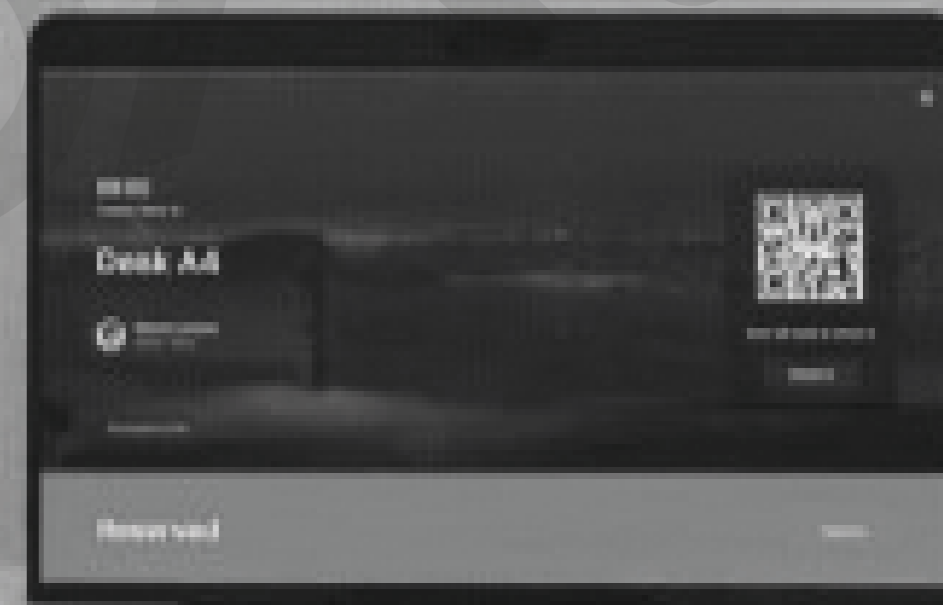
Collaborate like you're in-person, even when you're not. Zoom's persistent whiteboards are perfect for collaborative brainstorms, ideation, and iteration.

Contribute to whiteboards from your desktop application, mobile application, or Zoom for touch devices. Whiteboards can easily be saved to Zoom Chat for further editing or collaboration.

## Hotdesking

Zoom have enhanced their Scheduling Displays to show in-room people counting to help attendees keep to social distancing requirements. The Zoom Rooms camera will constantly monitor people in a room, displaying the count on the rooms scheduling display. Rooms will also report on room occupancy over time in the Zoom Rooms dashboard, making it easier to track and enforce any occupancy policies or limits.

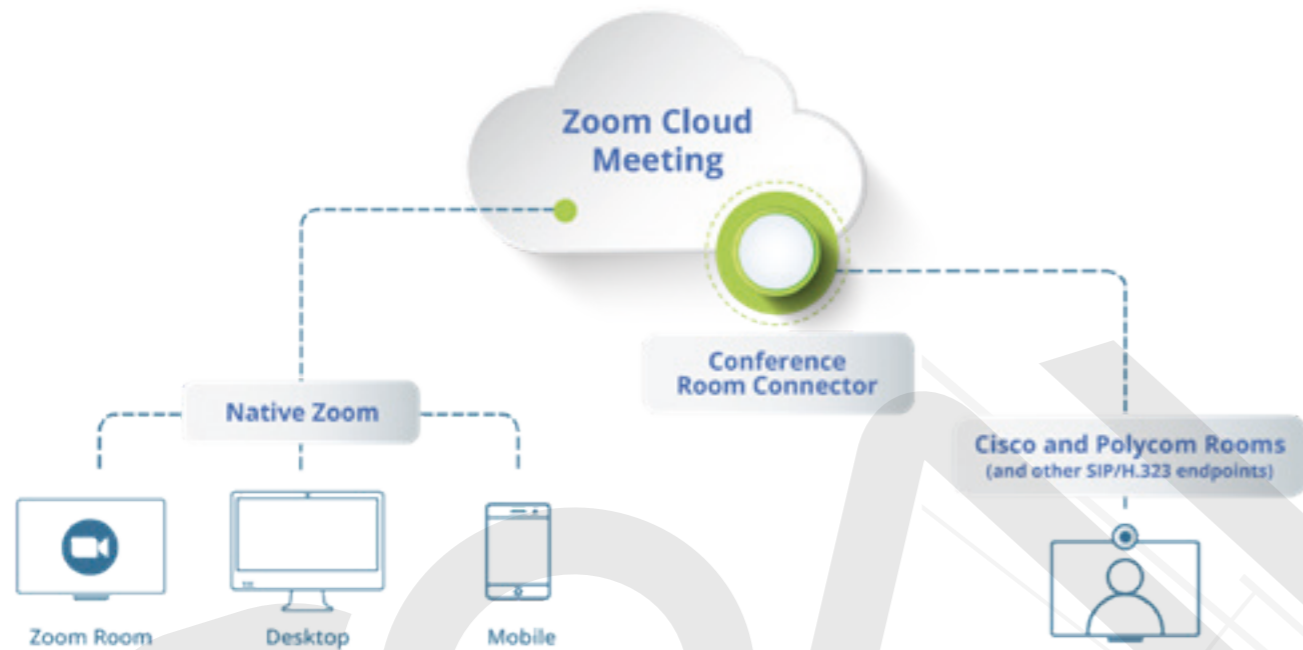
With Zoom hot desking, employees will be able to book desks and spaces using an interactive map and eventually select seats or arrangements recommended by Zoom's AI, giving organizations the ability to reconfigure their workspaces for flexible working. (Coming Soon)



## In-Room People Counting



**Zoom Rooms can join 3rd party meetings with one-click**  
(both audio & video!)



#### Key Features:

- > Leverage investments in Poly, Lifesize, Cisco Tandberg, Huawei, AVer
- > One-tap start and join for Poly, Cisco, and Lifesize
- > Meet with other conference rooms, desktops, or mobile devices in the Zoom cloud
- > Configure and manage all deployed Zoom Rooms and SIP/H.323 rooms from a single admin portal
- > Dual-screen support for content and video streams
- > Invite SIP/H.323 Guests into Zoom Meetings
- > Ability to pair and call into a Zoom meeting from any web browser
- > Bring 1080p high quality video, audio, and web conferencing to your existing rooms
- > Cut the cords, cables, and dongles - present content

## Invite SIP/H.323 Guests into Zoom Meetings



#### Key Features

Multiple ways to include traditional endpoints:

- > Connection details included in outgoing Zoom invite emails
- > Dial in info available in Zoom meetings
- > Call out to an H.323 / SIP from within a Zoom meeting
- > Ability to pair and call into a Zoom meeting from any web browser

## Zoom Conference Room Connector

Interop solution for connecting third-party systems with Zoom



## Centralised room and device management and administration

Get the overview status and management of all deployed Zoom Rooms and SIP/H.323 rooms in a single admin portal. Using the the Zoom Device Management (ZDM) tool from the same web portal you can also manage your Zoom Rooms and devices without having to physically engage with each room's devices or be an expert in device management. With Apple and Windows devices, there is a standard MDM enrolment process. With Zoom Rooms Appliances, there's no pre-enrolment or enrolment process necessary.



**Floor plan with Zoom Deployment**

**All you need are the following hardware components and a Zoom Rooms license to get up and running**

**Zoom Rooms are perfect for...**

**Executive offices and focus rooms**

Easy, intuitive controls. Start a meeting in seconds with calendar integration and one-touch to start.

**Huddle rooms**

Teams can convene for impromptu or scheduled meetings. Supports touch screens for powerful collaboration. Affordable to outfit all your rooms.

**Board and conference rooms**

Fast deployment with off-the-shelf hardware. Up to three screens show content, active speaker, and participants.

**Training rooms**

Wireless screen sharing for presentations. Multi-cam set up to capture different views. Custom audio/visual set up depending on use cases.

- 1 PC / MAC / Chromebox
- 2 Display
- 3 Controller (Ipad, Windows, Android or Integration Device)
- 4 Camera
- 5 Speaker & Mic





## Zoom Rooms Hardware

Simplified deployment options with Zoom certified pre-configured hardware





## Native Zoom Rooms™ Software Experience

The Crestron Flex UC-MM30-Z-I system provides a complete video conference room solution with one-touch meeting joins for Zoom Rooms software. It supports single or dual video displays and features a Crestron Flex tabletop conference device, UC Bracket Assembly, and a collaboration camera.

It can also integrate with a Crestron control system to enable touch screen control of room lighting, motorized window shades, climate control, AV, and other amenities.



## Zoom Small Room Desktop Version Crestron Flex UC-MM30-Z-I



1



### High-Definition Video Conferencing

The included collaboration camera (CCS-CAM-USB-F-400) features an ultra wide-angle 150° diagonal field of view to capture an entire conference room in Full HD 1080p video resolution. High precision aspherical optics, 12 MP CMOS sensor, and advanced video processing ensure a clear video image free from light or noise artifacts.

2



### Simplified Deployment

The UC Bracket Assembly (UC-BRKT-200-S-T-ASSY) with UC-ENGINE provides preassembled components on one ready-to-mount bracket to simplify installation. The assembly can be mounted on a wall, or it can be attached to the rear of the display device. Crestron's direct connection method further simplifies installation with a single connection from the touch screen to the UC Bracket Assembly.

3



### Intuitive User Interface with Impressive Audio

With a large 7 in. HD colour touch screen and an integrated AEC-enabled USB speakerphone that affords full-duplex wideband audio performance, the Crestron Flex Tabletop Conference device (UC-2-Z) provides a superior conferencing and collaboration experience for meeting rooms, huddle spaces, and executive offices.

## Zoom Small Room Desktop Version + BYOC Crestron Flex UC-MM30-Z-I



1



### High-Definition Video Conferencing

The included collaboration camera (CCS-CAM-USB-F-400) features an ultra wide-angle 150° diagonal field of view to capture an entire conference room in Full HD 1080p video resolution. High precision aspherical optics, 12 MP CMOS sensor, and advanced video processing ensure a clear video image free from light or noise artifacts.

2



### Simplified Deployment

The UC Bracket Assembly (UC-BRKT-200-S-T-ASSY) with UC-ENGINE provides preassembled components on one ready-to-mount bracket to simplify installation. The assembly can be mounted on a wall, or it can be attached to the rear of the display device. Crestron's direct connection method further simplifies installation with a single connection from the touch screen to the UC Bracket Assembly.

3



### BYOC (Bring Your Own Codec)

Conference room visitors can connect their laptop to the Crestron Flex system to use their own UC conference platform. The UC Presentation Transmitter (UC-PR) switches to the connected laptop's UC platform and returns to the native Zoom Rooms platform when disconnected.

4



### Intuitive User Interface with Impressive Audio

With a large 7 in. HD colour touch screen and an integrated AEC-enabled USB speakerphone that affords full-duplex wideband audio performance, the Crestron Flex Tabletop Conference device (UC-2-Z) provides a superior conferencing and collaboration experience for meeting rooms, huddle spaces, and executive offices.

## Native Zoom Rooms™ Software Experience

The Crestron Flex UC-MM30-Z-I system provides a complete video conference room solution with one-touch meeting joins for Zoom Rooms software. It supports single or dual video displays and features a Crestron Flex tabletop conference device, UC Bracket Assembly with UC-ENGINE, UC Presentation Transmitter, and a collaboration camera.

It can also integrate with a Crestron control system to enable touch screen control of room lighting, motorized window shades, climate control, AV, and other amenities.

## Native Zoom Rooms™ Software Experience

The Crestron Flex UC-B30-Z system provides a complete video conference room solution with one-touch meeting joins for Zoom Rooms software. It supports single or dual video displays and features a 10.1 in. touch screen, UC Bracket Assembly with UC-ENGINE, and Crestron UC video



conference smart soundbar & camera. The touch screen also offers optional control of room lighting, shades, thermostats, and other equipment.

## Zoom Small / Medium Room Soundbar Version Crestron Flex UC-B30-Z



1



### High-Definition Video Conferencing

The collaboration camera (CCS-CAM-USB-F-400) features an ultra wide-angle 150° diagonal field of view to capture an entire conference room in Full HD 1080p video resolution. High precision aspherical optics, 12 MP CMOS sensor, and advanced video processing ensure a clear video image free from light or noise artifacts.

2



### Simplified Deployment

The UC Bracket Assembly (UC-BRKT-200-S-T-ASSY) with UC-ENGINE provides preassembled components on one ready-to-mount bracket to simplify installation. The assembly can be mounted on a wall, or it can be attached to the rear of the display device. Crestron's direct connection method further simplifies installation with a single connection from the touch screen to the UC Bracket Assembly.

3



### Intuitive User Interface

With a large 10.1 in. touch screen display, the Crestron® tabletop touch screen (TS-1070-B-S) provides superior conferencing control in meeting rooms, huddle spaces, and executive offices. Another 7 in. or 10.1 in. touch screen can be added to the solution in order to provide dual control for the Zoom Rooms software if required. Wall mount touch panel option also available (UC-B30-Z-WM).

## Zoom Small / Medium Room Soundbar Version + BYOC Crestron Flex UC-BX30-Z



1



### High-Definition Video Conferencing

The collaboration camera (CCS-CAM-USB-F-400) features an ultra wide-angle 150° diagonal field of view to capture an entire conference room in Full HD 1080p video resolution. High precision aspherical optics, 12 MP CMOS sensor, and advanced video processing ensure a clear video image free from light or noise artifacts.

2



### Simplified Deployment

The UC Bracket Assembly (UC-BRKT-200-S-T-ASSY) with UC-ENGINE provides preassembled components on one ready-to-mount bracket to simplify installation. The assembly can be mounted on a wall, or it can be attached to the rear of the display device. Crestron's direct connection method further simplifies installation with a single connection from the touch screen to the UC Bracket Assembly.

3



### BYOC (Bring Your Own Codec)

Conference room visitors can connect their laptop to the Crestron Flex system to use their own UC conference platform. The UC Presentation Transmitter (UC-PR) switches to the connected laptop's UC platform and returns to the native Zoom Rooms platform when disconnected.

4



### Intuitive User Interface

With a large 10.1 in. touch screen display, the Crestron® tabletop touch screen (TS-1070-B-S) provides superior conferencing control in meeting rooms, huddle spaces, and executive offices. Another 7 in. or 10.1 in. touch screen can be added to the solution in order to provide dual control for the Zoom Rooms software if required. Wall mount touch panel option also available (UC-B30-Z-WM).

## Native Zoom Rooms™ Software Experience

The Crestron Flex UC-BX30-Z system provides a complete video conference room solution with one-touch meeting joins for Zoom Rooms software. It supports single or dual video displays and features a 10.1 in. touch screen, UC Bracket Assembly with UC-ENGINE, and Crestron UC video

conference smart soundbar & camera. The touch screen also offers optional control of room lighting, shades, thermostats, and other equipment.

## Native Zoom Rooms™ Software Experience

The UC-M50-Z system provides a complete video conference room solution with one-touch meeting joins for Zoom Rooms software. It supports single or dual video displays, and features the Crestron Flex tabletop conferencing device, UC Bracket Assembly with UC-ENGINE, a

collaboration camera, cables, and power supply. The touch screen also offers optional control of room lighting, shades, thermostats, and other equipment.



## Zoom Medium Room Desktop Version Crestron Flex UC-M50-Z



1



### High-Definition Video Conferencing

The included collaboration camera (CCS-CAM-USB-F-400) features an ultra wide-angle 150° diagonal field of view to capture an entire conference room in Full HD 1080p video resolution. High precision aspherical optics, 12 MP CMOS sensor, and advanced video processing ensure a clear video image free from light or noise artifacts.

2



### Simplified Deployment

The UC Bracket Assembly (UC-BRKT-200-S-T-ASSY) with UC-ENGINE provides preassembled components on one ready-to-mount bracket to simplify installation. The assembly can be mounted on a wall, or it can be attached to the rear of the display device. Crestron's direct connection method further simplifies installation with a single connection from the touch screen to the UC Bracket Assembly.

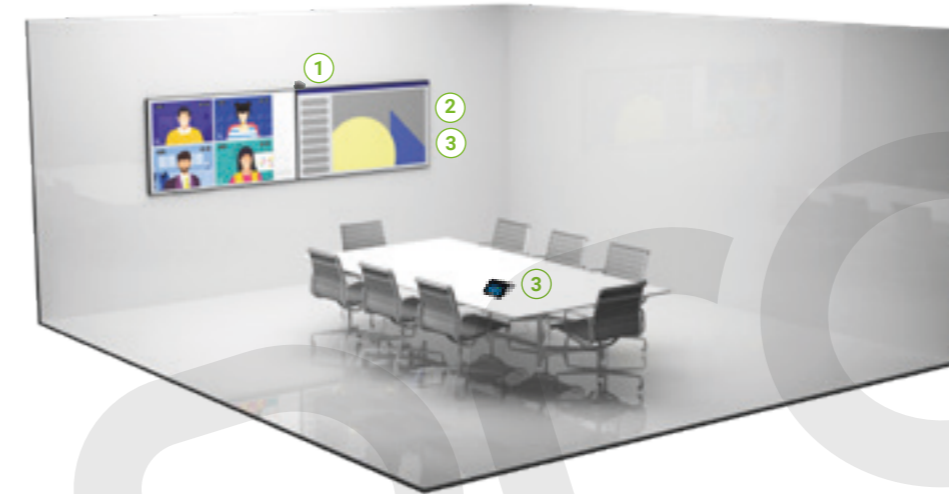
3



### Intuitive User Interface with Impressive Audio

The Crestron Flex Tabletop Conference device (CCS-UC-1-T-V) provides a superior conferencing and collaboration experience with its large 7 in. HD display, integrated 360° quad microphone array, and an AEC-enabled USB speakerphone that supports full-duplex wideband audio performance. Another 7 in. or 10.1 in. touch screen can be added to the solution in order to provide dual control for the Zoom Rooms software if required.

## Zoom Medium Room Desktop Version + BYOC Crestron Flex UC-MX50-Z



1



### High-Definition Video Conferencing

The collaboration camera (CCS-CAM-USB-F-400) features an ultra wide-angle 150° diagonal field of view to capture an entire conference room in Full HD 1080p video resolution. High precision aspherical optics, 12 MP CMOS sensor, and advanced video processing ensure a clear video image free from light or noise artifacts.

2



### Simplified Deployment

The UC Bracket Assembly (UC-BRKT-200-S-T-ASSY) with UC-ENGINE provides preassembled components on one ready-to-mount bracket to simplify installation. The assembly can be mounted on a wall, or it can be attached to the rear of the display device. Crestron's direct connection method further simplifies installation with a single connection from the touch screen to the UC Bracket Assembly.

3



### BYOC (Bring Your Own Codec)

Conference room visitors can connect their laptop to the Crestron Flex system to use their own UC conference platform. The UC Presentation Transmitter (UC-PR) switches to the connected laptop's UC platform and returns to the native Zoom Rooms platform when disconnected.

4



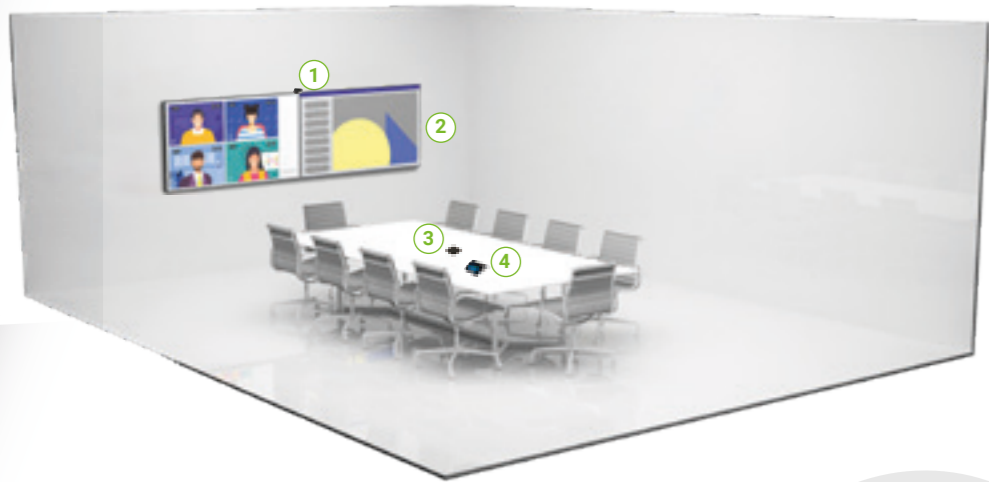
### Intuitive User Interface with Impressive Audio

The Crestron Flex Tabletop Conference device (CCS-UC-1-T-V) provides a superior conferencing and collaboration experience with its large 7 in. HD display, integrated 360° quad microphone array, and an AEC-enabled USB speakerphone that supports full-duplex wideband audio performance. Another 7 in. or 10.1 in. touch screen can be added to the solution in order to provide dual control for the Zoom Rooms software if required.

## Native Zoom Rooms™ Software Experience

The UC-MX50-Z system provides a complete video conference room solution with one-touch meeting joins for Zoom Rooms software. It supports single and dual video displays, and features the Crestron Flex tabletop conferencing device, UC Bracket Assembly with UC-ENGINE, a collaboration camera, cables, and power

supply. The touch screen also offers optional control of room lighting, shades, thermostats, and other equipment.



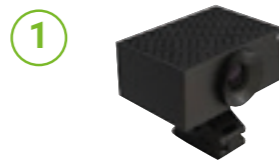
### Native Zoom Rooms™ Software Experience

The UC-M70-Z system provides a complete video conference room solution with one-touch meeting joins for Zoom Rooms software. It supports single or dual video displays, and features the Crestron Flex tabletop conferencing device, UC Bracket Assembly with UC-ENGINE, a

collaboration camera, cables, and power supply. The touch screen also offers optional control of room lighting, shades, thermostats, and other equipment.



## Zoom Large Room Desktop Version Crestron Flex UC-M70-Z



### Smart camera for medium to large rooms

Huddly L1 is a collaboration camera that delivers smart user experiences in large and medium meeting rooms. Designed to make video meetings inclusive and productive for the whole team, it provides instant, responsive framing, and Full-HD video of everyone in the room. Huddly L1 is compact and unobtrusive, with no moving mechanical parts.



### Simplified Deployment

The UC Bracket Assembly (UC-BRKT-200-S-T-ASSY) with UC-ENGINE provides preassembled components on one ready-to-mount bracket to simplify installation. The assembly can be mounted on a wall, or it can be attached to the rear of the display device. Crestron's direct connection method further simplifies installation with a single connection from the touch screen to the UC Bracket Assembly.



### Microphone Pod

The CCS-UCA-MIC is a low-profile extension microphone pod designed exclusively for use with a Crestron Flex Tabletop Conference System. Up to two mic pods may be connected to a single conference device to extend its pickup range to cover large tables. Optionally, two microphone pods may be daisy-chained, or connected to the mic pod ports on the rear of the conference device, using the cables provided with each microphone pod.



### Intuitive User Interface with Impressive Audio

The Crestron Flex Tabletop Conference device (CCS-UC-1-T-V) provides a superior conferencing and collaboration experience with its large 7 in. HD display, integrated 360° quad microphone array, and an AEC-enabled USB speakerphone that supports full-duplex wideband audio performance. Another 7 in. or 10.1 in. touch screen can be added to the solution in order to provide dual control for the Zoom Rooms software if required.

## Zoom Large Room Desktop Version + BYOC Crestron Flex UC-MX70-Z



### Smart camera for medium to large rooms

Huddly L1 is a collaboration camera that delivers smart user experiences in large and medium meeting rooms. Designed to make video meetings inclusive and productive for the whole team, it provides instant, responsive framing, and Full-HD video of everyone in the room. Huddly L1 is compact and unobtrusive, with no moving mechanical parts.



### Simplified Deployment

The UC Bracket Assembly (UC-BRKT-200-S-T-ASSY) with UC-ENGINE provides preassembled components on one ready-to-mount bracket to simplify installation. The assembly can be mounted on a wall, or it can be attached to the rear of the display device. Crestron's direct connection method further simplifies installation with a single connection from the touch screen to the UC Bracket Assembly.



### BYOC (Bring Your Own Codec)

Conference room visitors can connect their laptop to the Crestron Flex system to use their own UC conference platform. The UC Presentation Transmitter (UC-PR) switches to the connected laptop's UC platform and returns to the Zoom Rooms platform when disconnected.



### Microphone Pod

The CCS-UCA-MIC is a low-profile extension microphone pod designed exclusively for use with a Crestron Flex Tabletop Conference System. Up to two mic pods may be connected to a single conference device to extend its pickup range to cover large tables. Optionally, two microphone pods may be daisy-chained, or connected to the mic pod ports on the rear of the conference device, using the cables provided with each microphone pod.



### Intuitive User Interface with Impressive Audio

The Crestron Flex Tabletop Conference device (CCS-UC-1-T-V) provides a superior conferencing and collaboration experience with its large 7 in. HD display, integrated 360° quad microphone array, and an AEC-enabled USB speakerphone that supports full-duplex wideband audio performance. Another 7 in. or 10.1 in. touch screen can be added to the solution in order to provide dual control for the Zoom Rooms software if required.

## Native Zoom Rooms™ Software Experience

The Crestron Flex UC-C100-Z system provides a customizable conference room solution for use with one-touch meeting joins for Zoom Rooms software using your choice of display devices, cameras, speakers, microphones, and other AV equipment. Any Zoom Rooms software compliant USB camera and USB audio conferencing interface (or speakerphone) may be used. The configuration above

features the Shure Series MXA310 Table Array microphone and Huddly collaboration camera. It supports single or dual video displays and features a 10.1 in. touch screen, UC Presentation Transmitter and UC Bracket Assembly.



## Zoom Custom Room Version + 3rd party peripherals Crestron Flex UC-C100-Z



### High-Definition Video Conferencing

The collaboration camera (CCS-CAM-USB-F-400) features an ultra wide-angle 150° diagonal field of view to capture an entire conference room in Full HD 1080p video resolution. High precision aspherical optics, 12 MP CMOS sensor, and advanced video processing ensure a clear video image free from light or noise artifacts.



### Simplified Deployment

The UC Bracket Assembly (UC-BRKT-200-S-T-ASSY) with UC-ENGINE provides preassembled components on one ready-to-mount bracket to simplify installation. The assembly can be mounted on a wall, or it can be attached to the rear of the display device. Crestron's direct connection method further simplifies installation with a single connection from the touch screen to the UC Bracket Assembly.



### Shure MXA Series

Choose between the following 3rd party audio devices: MXA910 Ceiling Array Microphone, MXA710 Linear Array Microphone or the MXA310 Table Array Microphone. (Certified for Zoom).



### Intuitive User Interface

With a large 10.1 in. capacitive touch screen display, the Crestron® tabletop touch screen (TS-1070-B-S) provides superior conferencing control in meeting rooms, huddle spaces, and executive offices. Another 7 in. or 10.1 in. touch screen can be added to the solution in order to provide dual control for the Zoom Rooms software if required. Wall mount touch panel also available (UC-C100-Z-WM).

## Zoom Custom Room Version + BYOC + 3rd party peripherals Crestron Flex UC-CX100-Z



## Native Zoom Rooms™ Software Experience

The Crestron Flex UC-CX100-Z system provides a customizable conference room solution for use with one-touch meeting joins for Zoom Rooms software using your choice of display devices, cameras, speakers, microphones, and other AV equipment. Any Zoom Rooms software compliant USB camera and USB audio conferencing interface (or speakerphone) may be used. The configuration above features the

Shure Series MXA310 Table Array microphone and Huddly collaboration camera. It supports single or dual video displays and features a 10.1 in. touch screen, UC Presentation Transmitter and UC Bracket Assembly.



### High-Definition Video Conferencing

The collaboration camera (CCS-CAM-USB-F-400) features an ultra wide-angle 150° diagonal field of view to capture an entire conference room in Full HD 1080p video resolution. High precision aspherical optics, 12 MP CMOS sensor, and advanced video processing ensure a clear video image free from light or noise artifacts.



### Simplified Deployment

The UC Bracket Assembly (UC-BRKT-200-S-T-ASSY) with UC-ENGINE provides preassembled components on one ready-to-mount bracket to simplify installation. The assembly can be mounted on a wall, or it can be attached to the rear of the display device. Crestron's direct connection method further simplifies installation with a single connection from the touch screen to the UC Bracket Assembly.



### BYOC (Bring Your Own Codec)

Conference room visitors can connect their laptop to the Crestron Flex system to use their own UC conference platform. The UC Presentation Transmitter (UC-PR) switches to the connected laptop's UC platform and returns to the Zoom Rooms platform when disconnected.



### Shure MXA Series

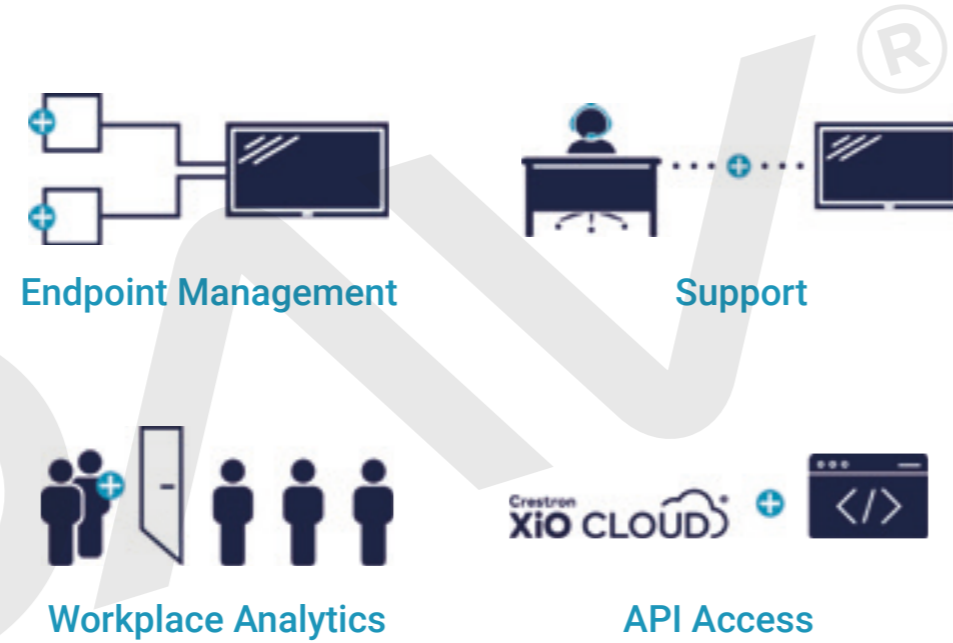
Choose between the following 3rd party audio devices: MXA910 Ceiling Array Microphone, MXA710 Linear Array Microphone or the MXA310 Table Array Microphone. (Certified for Zoom).



### Intuitive User Interface

With a large 10.1 in. capacitive touch screen display, the Crestron® tabletop touch screen (TS-1070-B-S) provides superior conferencing control in meeting rooms, huddle spaces, and executive offices. Another 7 in. or 10.1 in. touch screen can be added to the solution in order to provide dual control for the Zoom Rooms software if required. Wall mount touch panel also available (UC-C100-Z-WM).

## Crestron XIO CLOUD™



### Manage remotely:

Update settings and firmware remotely

- > Change setting once, update everywhere immediately
- > Update firmware on all devices at once – security fixes in minutes
- > Cloud audit logs enable quick problem identification and solution

### Monitor instantly:

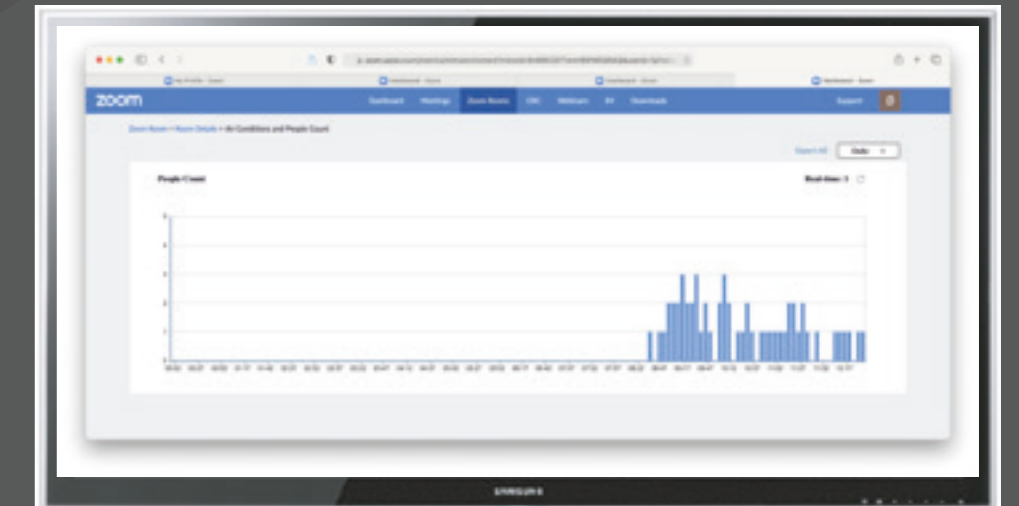
Instant notification and remote implementation

- > View live status of thousands of devices from anywhere at any time
- > Know of any change on a device within seconds
- > No need for extra configuration tools



### Workplace Analytics:

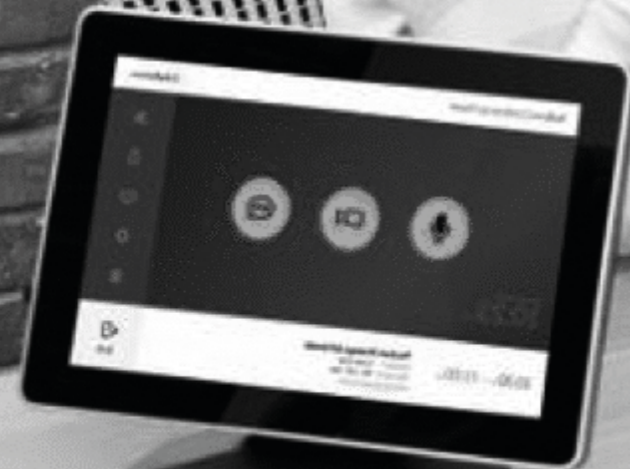
Understand how spaces are being used, and by how many people. Workplace analytics will provide enhanced dashboards allowing you to best understand how rooms and systems are being used. These include system usage versus occupancy, and new people counting and room capacity functionality.



## Crestron Room Booking

- > 7" or 10" capacitive touch screen display with custom-programmable control buttons
- > Wi-Fi® capabilities and PoE+ installation for maximum flexibility and convenience
- > Proximity Sensor detects motion and awakens screen upon approach
- > Bluetooth® beacon enables touchless room control from mobile devices
- > Ability to view space and meeting information, reserve a space, view upcoming reservations and identify room availability easily
- > Users can also view the building floor plan and book another room, using a Nearby Rooms feature







## Poly Studio P15 – Personal Video Bar



### The personal video bar that's the closest thing to being there

- > Look and sound your best on video calls with one sleek device
- > Easily fits atop your display, or tripod mount for flexibility
- > Robust cloud management using Poly Lens



- > 4K resolution
- > High-performance image sensor
- > Optimized field of view
- > Automatic low-light compensation and brilliant Automatic camera framing
- > Integrated privacy shutter
- > Integrated speaker with acoustic suspension
- > Advanced microphone array
- > NoiseBlockAI
- > Acoustic Fence

## Personal Meeting Display Poly Studio P21



1



### The personal meeting display where form and function unite

- > Everything you need in one sleek, stylish device
- > Simple to set up and connect
- > Works with any app
- > Dedicated video display when you're in calls, additional PC/Mac display when you're not

#### Video and audio features

- > 21" enterprise-grade display
- > Exceptional camera optics
- > Integrated ambient lighting
- > Integrated microphone with powerful stereo speakers
- > Supported by Zoom

#### Audio features

- > Integrated privacy shutter
- > LED status bar
- > Easy access controls
- > USB hub built-in
- > Wireless phone charging



Bring your own Codec Room Systems

## Poly Studio R30 Small Rooms: BYOC (Bring your own Codec)



1



### Poly Studio R30

- > Sharp 4K camera with 120-degree field of view.
- > Poly DirectorAI smart camera technology.
- > Powerful integrated speaker.
- > Multi-microphone array.
- > Works with any video app on your PC or Mac.
- > Recommended room size: 15 x 15 ft (4.5 x 4.5 m)

### IDEAL FOR

Where users bring their own laptop to act as the codec





1



- ### Poly Studio USB<sup>®</sup>
- > Audio and video bar including camera framing, real time presenter tracking, NoiseBlock AI and Acoustic Fence
  - > Automatic speaker tracking
  - > WIFI connectivity for remote management
  - > Simple USB connection to a PC or Mac running any video app or cloud service
  - > Certified for Microsoft Teams
  - > Recommended room size: Up to 15 x 20 ft (4.5 x 6 m)

**IDEAL FOR**  
Where users bring their own laptop to act as the codec



Poly Studio USB  
Medium Rooms: BYOC (Bring your own Codec)



## Studio X30 Small Rooms

Powered by  
**android**



1

2

### Poly Studio X30 Video Bar

- > Powerful audio pickup and incredible noise blocking technology allows every word to be heard without distractions
- > Get any small room up and running in minutes, with a simple setup process and all-in-one video bar design
- > Compact, lightweight design that easily fits on top or underneath display
- > No PC or Mac required
- > Up to 6 participants

### Poly TC8 Touch Controller

- > Native Zoom experience and simplified meeting control

Microsoft Teams Rooms on Android

## Studio X70 Large Rooms



1



### Poly Studio X70 Video Bar

- > Dual cameras with 4K+ sensors
- > Two-way stereo speakers, aluminium cone tweeters, and advanced bass ports
- > AI-driven camera array
- > NoiseBlockAI noise reduction technology
- > Seamless native experience on leading cloud video services
- > Mic pickup range up to 25 ft
- > Get rooms up and running fast – no PC or Mac needed
- > Up to 30 participants

### Camera Specifications

- > 2 lenses
- > 120-degree HFOV, 70-degree HFOV
- > 140-degree DFOV, 78-degree DFOV
- > 2x 20 Megapixel sensors
- > 7.3x digital zoom
- > UHD 2160p (4K) capture resolution
- > Automatic group framing
- > Automatic speaker tracking
- > Additional cameras can be added via USB

2



### Poly TC8 Touch Controller

- > Native Zoom experience and simplified meeting control



1



### Poly Studio X50 Video Bar

- > Powerful audio pickup and incredible noise blocking technology allows every word to be heard without distractions
- > Get any small or medium room up and running in minutes, with a simple setup process and all-in-one video bar design
- > Make it easy for anyone, even guests, to share content wirelessly from any personal device – with no special apps needed
- > Speaker / conversation tracking for optimized views of people talking
- > Supports dual monitors and additional USB Camera
- > Up to 10 participants

2



### Poly TC8 Touch Controller

- > Native Zoom experience and simplified meeting control



## Studio X50 Small to Medium Rooms

## G7500 + 3rd party Audio System Medium to Large Rooms



- Poly Studio E70 smart camera**
- > Dual lenses with 20 megapixel 4k sensors
  - > AI-driven camera array
  - > Motorised, integrated electronic privacy shutter
  - > Includes Poly Lens management software
  - > Connect to Poly G7500
  - > Supported for Zoom Rooms
  - > Recommended room size: 15 x 28 ft (4.5 to 8.5 m)
  - > 10+ participants



- G7500**
- > Advanced content sharing and annotation
  - > NoiseBlock AI and Acoustic Fence to keep the conversation focused



- Shure MXA Series**
- Choose between the following 3rd party audio devices:
- > MXA920 Ceiling Array Microphone,
  - > MXA710 Linear Array Microphone
  - > MXA310 Table Array Microphone (Certified for Microsoft teams)



- Poly TC8 Touch Controller**
- > Native Zoom experience and simplified meeting control



- Studio E70**
- > Dual lenses with 20 megapixel 4k sensors
  - > AI-driven camera array
  - > Motorised, integrated electronic privacy shutter
  - > Includes Poly Lens management software
  - > Connect to Poly G7500
  - > Supported for Zoom Rooms
  - > Recommended room size: 15 x 28 ft (4.5 to 8.5 m)
  - > 10+ participants



- G7500**
- > Advanced content sharing and annotation
  - > NoiseBlock AI and Acoustic Fence to keep the conversation focused



- Trio C60 (optional)**
- > Make sure all participants can hear be clearly heard with Poly signature audio and Poly Noiseblock AI
  - > Daisy chain two or more Trio C60 devices



- Poly TC8 Touch Controller**
- > Native Zoom experience and simplified meeting control



## Poly Studio E70 Large Rooms

# Poly Management Tools



## Challenge

### Deployment

- > Inconsistent
- > Unreliable
- > Technically difficult
- > Not scalable

### Management

- > Lack of control
- > Security concerns
- > Inventory visibility

### Monitoring

- > Reactive response
- > Quality of experience

### Insights

- > Lack of visibility into rooms, spaces, how tech is used, health and safety
- > ROI/TCO

## Impact



Low adoption rate = lower UC ROI



Facilities Costs Rise



IT resources drained

## Solutions

### Deployment

- > Easy onboarding
- > Bulk profile provisioning

### Management

- > Access control
- > Software update
- > Real-time settings
- > Inventory

### Monitoring

- > Active quality monitoring
- > Max uptime
- > Proactive troubleshooting

### Insights

- > Complete investment visibility
- > ROI/TCO insights
- > Health and safety



## INTRODUCING POLY LENS

- > A cloud service that delivers device insights and management vital to optimizing workplace experiences
- > A single pane of glass to help manage all your Poly devices
- > News feeds highlight areas of interest like device health and usage trends, and available software updates
- > Frictionless device onboarding for thousands without heavy technical support
- > Easy device configuration, ensuring consistency for end users while lowering IT help tickets
- > Centralized control of software across multiple locations limits need for IT travel or local experts
- > Active monitoring of device health for maximum uptime improves operations and user satisfaction



## Poly Lens Desktop

Make the most of your meetings with Poly Lens Desktop. A single app for customising your personal devices to how you work, whether that's in the home or office. Staying up to date with the latest software is easy as a click, now, or when it suits your schedule. With built-in, customisable health and wellness reminders, you'll feel better throughout the workday staying hydrated and active. Staying on-task is easier when you mask distractions with our focus audio. Rest easy knowing that help is no more than a click away with guides and contact information.

### Benefits:

- > Customise your personal device to meet your collaborative needs and workstyle
- > Accept built-in notices letting you know when an update is available and ready for install
- > Customisable reminders that make sure you get the hydration and breaks you need to stay productive
- > Get more done throughout your day while minimising common distractions found in the home or office setting with focus audio
- > With built-in self-help guides, support information, and troubleshooting tools you'll minimise disruption to your workday



## Appliance-based Solutions



Rally Bar Mini



MeetUp

Rally Bar Mini



Small to Medium Rooms

Rally Bar



Medium to Large Rooms

Rally Plus



Large Rooms

### Remarkably Simple Meeting Room Solutions

Logitech for Zoom Rooms Appliances include an Ultra-HD Logitech conferencecam with motorised pan and tilt, RightSense™ technologies, and the Logitech Tap touch controller for virtually any room size or shape. Support for Zoom Rooms Appliances means set up is remarkably simple with no need for a PC or Mac. Plus, device management has never been easier through the Zoom Dashboard

## Logitech Small Room Solution for Zoom Rooms



### Featured Components:

#### Logitech MeetUp Conference Bar

1



- > Super-wide 120° field of view
- > Ultra HD 4K image sensor
- > Razor-sharp optics
- > 3-microphones and custom-tuned speaker
- > Motorized pan/tilt
- > 5x HD zoom
- > Plug-and-play USB connectivity

#### Logitech RoomMate

2



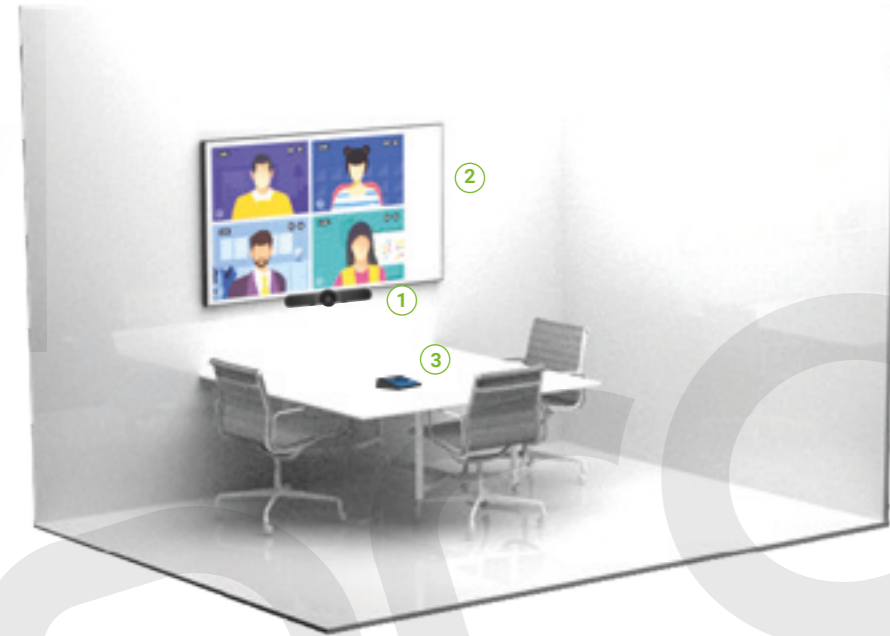
- > In a sleek, low-profile form factor, Logitech RoomMate delivers all the power you need for HD video conferencing in rooms with one or two displays
- > Built-in support for Zoom Rooms

#### Logitech Tap

3



- > Touch controller for room solutions with One-touch Join
- > Responsive 10.1" touch screen
- > Commercial-grade cabling and cable management
- > Supports both wired and wireless DirectShare content sharing
- > Optional Table and Riser mounts add convenience and rotate 180° for easy viewing. Or, add a Wall Mount to save space in small and multipurpose rooms.



### Pre-configured Video Conferencing for Zoom Rooms™

The small room configuration with Logitech Rally Bar Mini delivers superior audio and video in a compact, all-in-one form factor. Clean cabling and flexible mounting options allow you to confidently deploy at scale. Support for Zoom Rooms Appliances means set up is remarkably simple with no need for a PC or Mac.



## Appliance-Based Small Room Solution MeetUp with Roommate

### Pre-configured Video Conferencing for Zoom Rooms™

The small room configuration with Logitech Rally Bar Mini delivers superior audio and video in a compact, all-in-one form factor. Clean cabling and flexible mounting options allow you to confidently deploy at scale. Support for Zoom Rooms Appliances means set up is remarkably simple with no need for a PC or Mac.



### Featured Components:

#### Logitech Rally Bar Mini

1



- > Premier all-in-one video bar for small rooms, in graphite or white
- > Motorised pan and tilt lens provides expansive room coverage
- > Ultra-low distortion speakers deliver crystal clear sound
- > AI Viewfinder for enhanced RightSight™ auto-framing and people count
- > Add up to two Rally Mic Pods to extend audio coverage

#### Logitech Tap

2



- > Touch controller for room solutions with One-touch Join
- > Responsive 10.1" touch screen
- > Commercial-grade cabling and cable management
- > Supports both wired and wireless DirectShare content sharing
- > Optional Table and Riser mounts add convenience and rotate 180° for easy viewing. Or, add a Wall Mount to save space in small and multipurpose rooms.

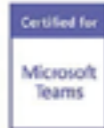







## Logitech MeetUp & Rally Bar Mini Feature Comparison



There are several key differences between the MeetUp and the Rally Bar Mini. They include:

- > The MeetUp Certifications (Certified for Skype® for Business, Cisco Jabber™ compatible, Windows, Mac, Microsoft Cortana certified)
- > The Rally Bar Mini Certifications (Certifications: Zoom™ Certified, Certified for Microsoft Teams as a USB device)
- > The MeetUp has 3 camera presets, which can be selected and returned to by remote control
- > The Rally Bar Mini has an AI viewfinder camera for automatic scene awareness and auto-framing
- > No computer or laptop is required in appliance mode for the Rally Bar Mini
- > The Rally Bar Mini has 6 integrated beamforming microphones, whereas the MeetUp has 3

Ideal Room Space	MeetUp	Rally Bar Mini
Total Room Coverage	163° x 110° Horizontal x Vertical	163° x 110° Horizontal x Vertical
Resolution	Ultra HD 4K	Built-in
Digital Zoom	5x	4x
Microphone	3-Element Beamforming Array	6-Element Beamforming Array
Audio Capture	4m	4.5m
Optional Expansion Mic	✓	✓
RightSense Technologies	✓	✓
Camera	3 Camera Presets + PTZ Camera	AI Viewfinder + PTZ Camera
Operation Mode	USB Mode (BYOD / PC)	USB Mode + Built-In Appliance Mode (No PC Required)
Certifications	  	  

## Pre-configured Video Conferencing for Zoom Rooms™

Experience brilliant optics and room-filling audio with the medium room configuration with Logitech Rally Bar, an all-in-one video bar purpose-built for midsize rooms. Mount neatly to the display or wall, or stand on a credenza. Support for Zoom Rooms Appliances means set up is remarkably simple with no need for a PC or Mac.



## Logitech Medium Room Solution for Zoom Rooms



### Logitech Rally Bar

- > All-in-one video bar for midsize rooms, in graphite or white
- > Lossless image quality up to 5X optical zoom, digitally enhanced to 15X total zoom
- > Large, ultra-low distortion speakers for room-filling sound
- > AI Viewfinder for enhanced RightSight™ auto-framing and people count
- > Add up to three Rally Mic Pods to extend audio coverage



### Logitech Tap

- > Touch controller for room solutions with One-touch Join
- > Responsive 10.1" touch screen
- > Commercial-grade cabling and cable management
- > Supports both wired and wireless DirectShare content sharing
- > Optional Table and Riser mounts add convenience and rotate 180° for easy viewing. Or, add a Wall Mount to save space in medium and multipurpose rooms.

## Logitech Large Room Solution for Zoom Rooms



### Featured Components:

#### Logitech Rally Plus: Appliance Mode

- > Modular video conferencing system for large rooms with a computing appliance purpose-built for video collaboration
- > Customizable for large rooms of virtually any size or shape Brilliant optics up to 5X optical zoom, digitally enhanced to 15X total zoom
- > Two Rally Speakers and two Rally Mic Pods (extensible up to seven) ensure every voice is clearly heard



#### Logitech Roommate

- > In a sleek, low-profile form factor, Logitech RoomMate delivers all the power you need for HD video conferencing in rooms with one or two displays
- > Built-in support for Zoom Rooms



#### Logitech Tap

- > Touch controller for room solutions with One-touch Join
- > Responsive 10.1" touch screen
- > Commercial-grade cabling and cable management
- > Supports both wired and wireless DirectShare content sharing
- > Optional Table and Riser mounts add convenience and rotate 180° for easy viewing. Or, add a Wall Mount to save space in small and multipurpose rooms.

## Pre-configured Video Conferencing for Zoom Rooms™

Featuring the expandable Rally Plus conference camera system and Logitech RoomMate computing appliance with built-in Zoom Rooms software, the large room configuration combines easy management with outstanding coverage across a wide range of room sizes and layouts.

## Appliance-Based Solutions - Tech specs



	MeetUp	Rally Bar Mini	Rally Bar	Rally Plus
Room Size	Small	Small to Medium	Medium to Large	Large to Extra Large
Conference Camera	MeetUp	Logitech Rally Bar Mini	Logitech Rally Bar	Logitech Rally Plus
Zoom Rooms Appliance	Yes	Yes	Yes	Yes
Logitech Tap Touch Controller	w/ RoomMate	Yes	Yes	w/ RoomMate
Rally Mounting Kit	Comes with MeetUp Wall Mount	No	No	Yes
Rally Mic Pod Hub	No	No	No	No
Optional Accessories	TV Mount for MeetUp TV Mount XL for MeetUp MeetUp Mic Extension Cable Expansion Mic for MeetUp	Tap Table Mount Tap Riser Mount Tap Wall Mount Rally Mic Pod (up to 2 total) Rally Mic Pod Hub TV Mount for Video Bars Wall Mount for Video Bars	Tap Table Mount Tap Riser Mount Tap Wall Mount Tap Rally Mic Pod (up to 3 total) Rally Mic Pod Hub TV Mount for Video Bars Wall Mount for Video Bars Rally Mic Pod Mount	Tap Table Mount Tap Riser Mount Tap Wall Mount Rally Mic Pod (up to 7 total) Rally Mic Pod Hub Rally Mic Pod Mount

### MeetUp



Small Room

### Rally Bar Mini



Small to Medium Rooms

### Rally Bar



Medium to Large Rooms

### Rally Plus



Large Rooms

### Everything You Need

Logitech Room Solutions for Zoom Rooms include everything you need for video meetings, available in small, medium, and large configurations. These pre-configured systems include a mini PC, Logitech conferencecam with RightSense™ technologies, PC mount with cable retention, and the Logitech Tap touch controller.

**Logitech Pc Based Video Conferencing Solutions for Zoom Rooms**



## Logitech Small Room Solution For Zoom Rooms



### PC Based Video Conferencing Preconfigured for Zoom

The small room configuration with Logitech Rally Bar Mini delivers superior audio and video in a compact, all-in-one form factor. Clean cabling and flexible mounting options allow you to confidently deploy at scale.

### Featured Components:

#### Logitech Rally Bar

- > All-in-one video bar for midsize rooms, in graphite or white
- > Lossless image quality up to 5X optical zoom, digitally enhanced to 15X total zoom
- > Large, ultra-low distortion speakers for room-filling sound
- > AI Viewfinder for enhanced RightSight™ auto-framing and people count
- > Add up to three Rally Mic Pods to extend audio coverage

#### Mini PC

- > Small footprint Zoom Certified compute of choice from a variety of partners (Lenovo, HP, Intel, Dell)

#### Logitech Tap

- > Touch controller for room solutions with One-touch Join
- > Responsive 10.1" touch screen
- > Commercial-grade cabling and cable management
- > Supports both wired and wireless DirectShare content sharing
- > Optional Table and Riser mounts add convenience and rotate 180° for easy viewing. Or, add a Wall Mount to save space in small and multipurpose rooms

### Featured Components:

#### Logitech MeetUp Conference Bar

- > Super-wide 120° field of view
- > Ultra HD 4K image sensor
- > Razor-sharp optics
- > 3-microphones and custom-tuned speaker
- > Motorised pan/tilt
- > 5x HD zoom
- > Plug-and-play USB connectivity

#### Mini PC

- > Small footprint Zoom Certified compute of choice from a variety of partners (Lenovo, HP, Intel, Dell)

#### Logitech Tap

- > Touch controller for room solutions with One-touch Join
- > Responsive 10.1" touch screen
- > Commercial-grade cabling and cable management
- > Supports both wired and wireless DirectShare content sharing
- > Optional Table and Riser mounts add convenience and rotate 180° for easy viewing. Or, add a Wall Mount to save space in small and multipurpose rooms



### Super-Wide field of view for small spaces

Enjoy a plug-and-play conference camera for small meeting rooms with a CollabOS appliance purpose-built for video collaboration. It is an all-in-one conference cam that has an ultra-wide lens that is perfect for holding meetings in small rooms.



## Logitech Medium Room Solution for Zoom Rooms



### PC Based Video Conferencing Preconfigured for Zoom

Experience brilliant optics and room-filling audio with the medium room configuration with Logitech Rally Bar2, an all-in-one video bar purpose-built for midsize rooms. Mount neatly to the display or wall, or stand on a credenza.



## Logitech Medium Room Solution for Zoom Rooms

### Featured Components:

#### Logitech Rally Bar

- > All-in-one video bar for midsize rooms, in graphite or white
- > Lossless image quality up to 5X optical zoom, digitally enhanced to 15X total zoom
- > Large, ultra-low distortion speakers for room-filling sound
- > AI Viewfinder for enhanced RightSight™ auto-framing and people count
- > Add up to three Rally Mic Pods to extend audio coverage

#### Mini PC

- > Small footprint Zoom Certified compute of choice from a variety of partners (Lenovo, HP, Intel, Dell)

#### Logitech Tap

- > Touch controller for room solutions with One-touch Join
- > Responsive 10.1" touch screen
- > Commercial-grade cabling and cable management
- > Supports both wired and wireless DirectShare content sharing
- > Optional Table and Riser mounts add convenience and rotate 180° for easy viewing. Or, add a Wall Mount to save space in small and multipurpose rooms



## Logitech Large Room Solution for Zoom Rooms



### PC Based Video Conferencing Preconfigured for Zoom

Enjoy maximum flexibility with Logitech Rally Plus for large rooms, a premium conferencecam that pairs an Ultra-HD PTZ camera with modular audio that scales to support a wide range of large room sizes and layouts.

### Featured Components:

#### Logitech Rally Plus

- > Modular video conferencing system for large rooms
- > Customizable for large rooms of virtually any size or shape
- > Brilliant optics up to 5X optical zoom, digitally enhanced to 15X total zoom
- > Two Rally Speakers and two Rally Mic Pods (extensible up to seven) ensure every voice is clearly heard

#### Mini PC

- > Small footprint Zoom Certified compute of choice from a variety of partners (Lenovo, HP, Intel, Dell)

#### Logitech Tap

- > Touch controller for room solutions with One-touch Join
- > Responsive 10.1" touch screen
- > Commercial-grade cabling and cable management
- > Supports both wired and wireless DirectShare content sharing
- > Optional Table and Riser mounts add convenience and rotate 180° for easy viewing. Or, add a Wall Mount to save space in small and multipurpose rooms





	MeetUp	Rally Bar Mini	Rally Bar	Rally Plus
Room Size	Small	Small to Medium	Medium to Large	Large to Extra Large
Conference Camera	MeetUp	Logitech Rally Bar Mini	Logitech Rally Bar	Logitech Rally Plus
Zoom Rooms Appliance	Yes	Yes	Yes	Yes
Logitech Tap Touch Controller	w/ RoomMate	Yes	Yes	w/ RoomMate
Rally Mounting Kit	Comes with MeetUp Wall Mount	No	No	Yes
Rally Mic Pod Hub	No	No	No	No
Optional Accessories	TV Mount for MeetUp TV Mount XL for MeetUp MeetUp Mic Extension Cable Expansion Mic for MeetUp	Tap Table Mount Tap Riser Mount Tap Wall Mount Rally Mic Pod (up to 2 total) Rally Mic Pod Hub TV Mount for Video Bars Wall Mount for Video Bars	Tap Table Mount Tap Riser Mount Tap Wall Mount Tap Rally Mic Pod (up to 3 total) Rally Mic Pod Hub TV Mount for Video Bars Wall Mount for Video Bars Rally Mic Pod Mount	Tap Table Mount Tap Riser Mount Tap Wall Mount Rally Mic Pod (up to 7 total) Rally Mic Pod Hub Rally Mic Pod Mount

## Accessories



**TV Mount for MeetUp**  
Securely attach MeetUp to your TV or monitor.



**Expansion Mic for MeetUp**  
Extend the microphone pickup range and add convenient mute control for smallroom configurations using MeetUp.



**Rally Mic Pod**  
Extend audio coverage and provide convenient access to mute controls. Compatible with the Rally System in the medium and large room configurations. Available in graphite or white.

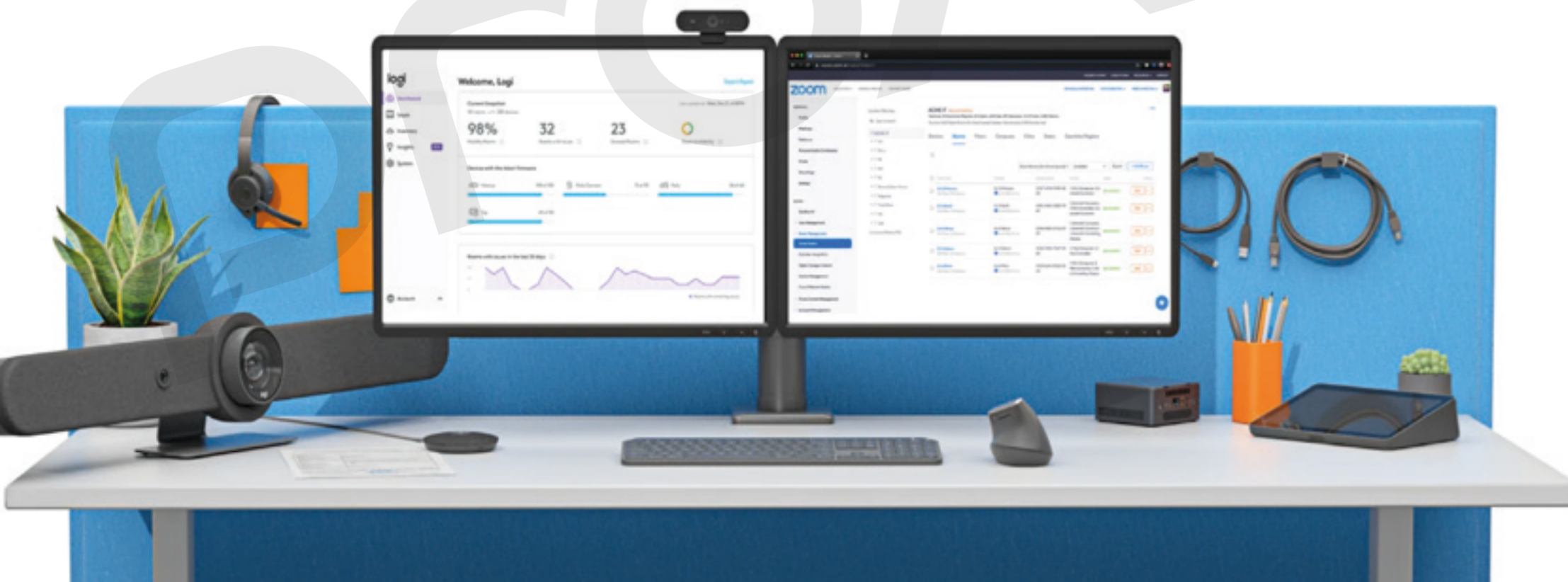


**Rally Mic POD Mount**  
Hide cables and anchor mics on the table or ceiling for a clean finished look. Compatible with the Rally System in the medium large room configurations. Available in graphite or white



**Mounts for Logitech Tap**  
Place the Logitech Tap touch controller on the tabletop, or add a mount for better security, convenience, and cable management. The table and Rise mounts fit in standard grommet holes and swivel 180° for operation from both sides of the table. The Wall Mount saves space in smaller rooms.

Easily monitor and manage your meeting room devices from the Zoom or Logitech Sync Dashboard. Plus, get business insights into how your rooms are being used.



## Remote management that scales to thousands of Logitech meeting room devices



### MODERN DEVICE MANAGEMENT

Logitech Sync makes it easy to support large-scale video deployments while minimising site visits and trouble tickets - all from a simple browser-based interface.

A fresh approach to remote monitoring and device management simplifies tasks like firmware updates and feature enablement, while an API and forward-looking architecture establish a robust foundation for new insights and integrations.

## Introducing Logitech Sync



## Monitoring

### Dashboard

#### 10 Rooms with Issues [View all](#)

Timestamp	Room Name	Devices	Issue Type
06/11/19 12:16 AM	US-NY-Soho	Rally Camera	Rally Camera disconnected
06/10/19 4:24 PM	HX-DF-Condoso	Rally	1 of 2 Mic Pods disconnected
06/10/19 1:16 AM	US-TX-Zilar	MeetUp	MeetUp disconnected
06/10/19 1:16 AM	US-CA-Soma	MeetUp	Room offline
06/09/19 11:16 AM	CA-BC-Oaktown	Rally, Rally Camera	2 Issues
06/09/19 11:16 AM	US-NY-Manhattan	Rally	2 Issues

348 Rooms in Inventory

8 errors 2 warnings

#### 101 Devices with Firmware Updates [View all](#)

365 Devices in Inventory

## Management

### ROOM STATUS IN REAL TIME

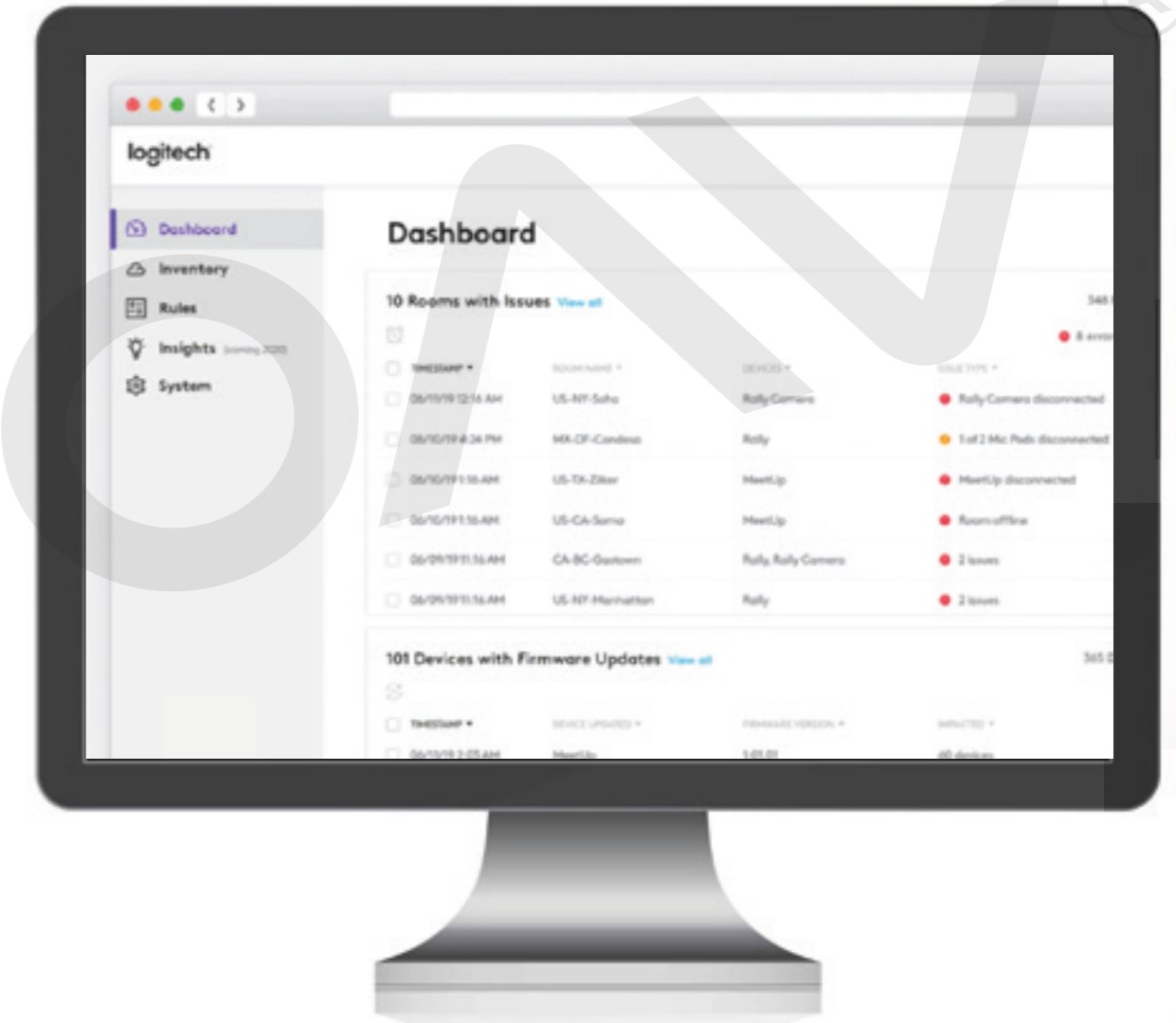
Don't wait for a panicked phone call or trouble ticket to surface problems like an offline room or disconnected device.

Sync automatically highlights issues that need your attention in real time and offers in-depth diagnostic info so you can resolve problems before they impact a meeting.

### LET SYNC MAKE THE SITE VISITS

Thanks to a modern design that supports both on-demand and scheduled updates, Sync helps you deploy product upgrades and bug fixes to all of your rooms.

Simply select your devices, choose an action, and let Sync make it happen.



logitech

### Dashboard

Inventory

Rules

Insights (January 2020)

System

### Dashboard

#### 10 Rooms with Issues [View all](#)

Timestamp	Room Name	Devices	Issue Type
06/11/19 12:16 AM	US-NY-Soho	Rally Camera	Rally Camera disconnected
06/10/19 4:24 PM	HX-DF-Condoso	Rally	1 of 2 Mic Pods disconnected
06/10/19 1:16 AM	US-TX-Zilar	MeetUp	MeetUp disconnected
06/10/19 1:16 AM	US-CA-Soma	MeetUp	Room offline
06/09/19 11:16 AM	CA-BC-Oaktown	Rally, Rally Camera	2 Issues
06/09/19 11:16 AM	US-NY-Manhattan	Rally	2 Issues

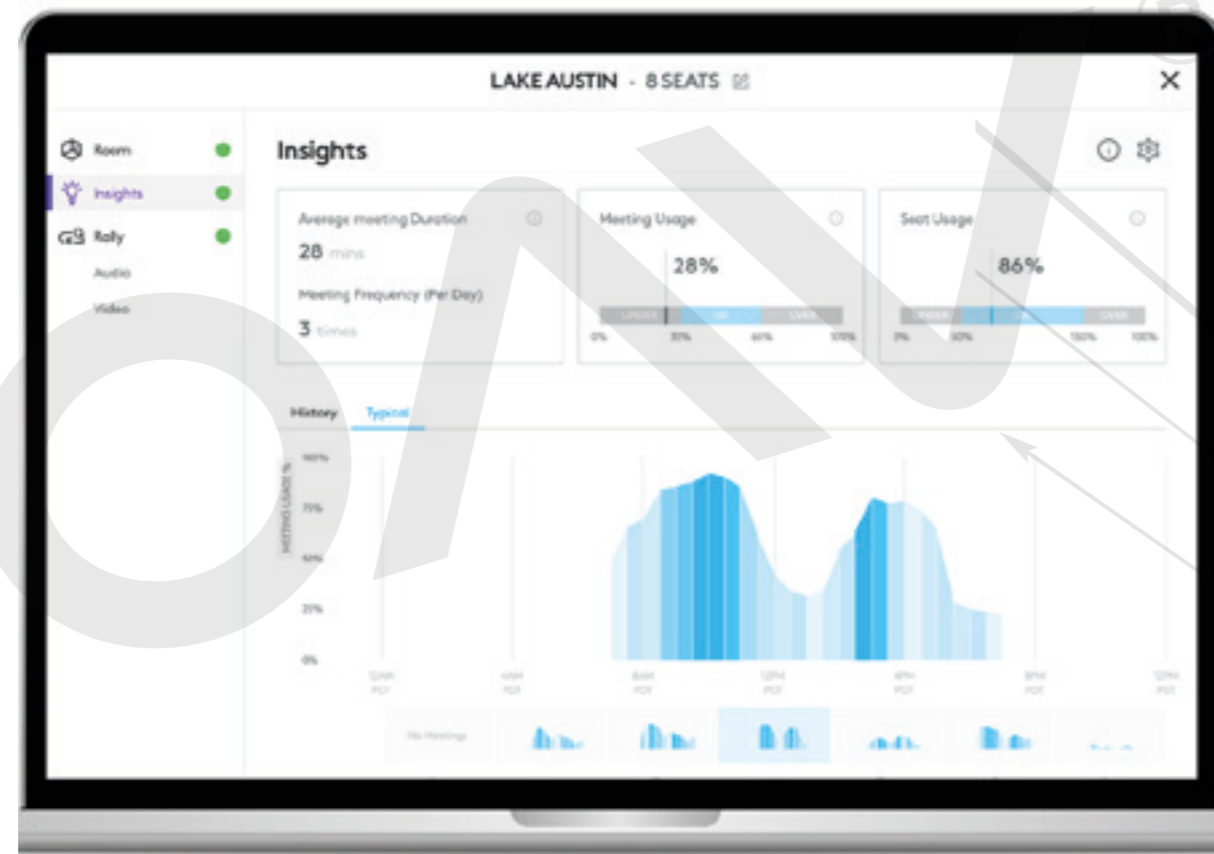
#### 101 Devices with Firmware Updates [View all](#)

Timestamp	Device Updated	Firmware Version	Impact
06/10/19 3:08 AM	MeetUp	9.09.00	All devices

## MAKE EVERY MEETING COUNT

Get insights that lead to more efficient and productive meetings.

Informed by rich data about how people use rooms and devices, Sync will help you make the most of your collaboration spaces and technologies



## WHY SYNC

Sync offers easy and secure scalability, no matter how many rooms and devices you manage.



### MODERN

Sync's intuitive and responsive interface is powered by a cloud-based architecture to accelerate deployment and simplify management



### SECURE

Because Sync employs end-to-end encryption and neither collects nor transmits audio, video, or shared content, meeting data remains private and secure



### SCALABLE

A capacity of more than 10,000 devices and a platform built for multitenancy make Sync an ideal solution for service providers and enterprise deployments



### FREEMIUM

No licenses, no invoices, no maintenance fees. While Logitech will add new capability and value to Sync, core device monitoring and management is free



# DTEN D7



## All-in-one Zoom Rooms touch display with interactive whiteboarding

The DTEN D7 is an award-winning, all-in-one, plug and play video conferencing solution for unparalleled collaborations. It comes complete with all core components for a seamless Zoom Rooms for Touch experience. You can easily set-up and start your meetings in about 15 minutes right out of the box with no technician. The DTEN D7 provides cutting-edge collaboration solution for any meeting

space at a budget-friendly rate.  
DTEN D7 55" or D7 55" Dual: Ideal for huddle rooms and small meetings spaces (1-7 people).  
DTEN D7 75": Ideal for either small meetings spaces (1-7 people), or conference and board rooms (7-15 people).

### Specifications

#### Display

- > Multi-Touch Display
- > Ultra HD 4K
- > LED (55" or 75")
- > 16.9
- > Capacitive Touch Screen

Software: Windows IOT

#### Camera System

- > Fixed Lens, Infinite Focus
- > F-value: 2.8k,
- > 4K
- > Diagonal Field of View (FOV): Up to 120 Degrees

#### Audio System

- > 16 Elements Microphone Array
- > Integrated Stereo Speakers
- > Acoustic Echo Cancellation
- > Automatic Gain Control (AGC)
- > Automatic Noise Reduction

#### Inputs & Outputs

- > HDMI Out x 1
- > USB 3.0 x 1
- > 3.5-mm Audio Jack x 1
- > Microphone x 1
- > Ethernet LAN (RJ45) x 1

#### Network

- > Ethernet (RJ-45) 100/1000 Mbps
- > Wi-Fi 802.11a/b/g/n, 802.11ac (2.4 and 5 GHz)
- > IPv4 Dynamic Host Configuration Protocol (DHCP)/ Static
- > HTTP Proxy Support



# DTEN ON



## All-in-one Zoom Rooms Appliance with DTEN ON for a premium meeting experience

The DTEN ON comes complete with all core components for a seamless Zoom Rooms for Touch experience. You can easily set-up and start your meetings in about 15 minutes right out of the box, with no technician. The DTEN ON provides cutting-edge collaboration solution for any meeting space at a budget-

friendly rate.  
DTEN ON 55": Ideal for huddle rooms and small meetings spaces (1-7 people).  
DTEN ON 75": Ideal for either small meetings spaces (1-7 people) or conference and board rooms (7-15 people).

### Specifications

#### Display

- > Multi-Touch Display
- > LED 55"
- > Ultra HD 4K
- > 16.9
- > Capacitive Touch Screen

Software: DTEN OS

#### Camera System

- > Fixed Lens, Infinitive Focus
- > F-value: 2.8k,
- > 4K
- > Diagonal Field of View (FOV): Up to 120 Degrees

#### Audio System

- > 16-Microphone Array
- > Integrated Stereo Speakers
- > Acoustic Echo Cancellation
- > Automatic Gain Control (AGC)
- > Automatic Noise Reduction

#### Inputs & Outputs

- > HDMI Out x 1
- > 3.5-mm Audio Jack x 1
- > Ethernet LAN (RJ45) x 1

#### Network

- > Ethernet (RJ-45) 100/1000 Mbps
- > Wi-Fi 802.11a/b/g/n, 802.11ac (2.4 and 5 GHz)
- > IPv4 Dynamic Host Configuration Protocol (DHCP)/ Static
- > HTTP/HTTPS Proxy Support



## Zoom for Home - DTEN ME

### All-in-One Personal Collaboration Device

Take the guesswork out of video enabling remote teams with a complete solution designed for the desktop. Zoom for Home DTEN ME lets you put your best foot forward with life-like video, crystal clear audio and one-touch to start Zoom meetings packed into an intuitive multi-touch display.

- > DTEN ME puts users IN the meeting, no matter where they are
- > In between meetings, the DTEN ME's spacious 27" display can be used as a second monitor
- > Provide meaningful, face-to-face interactions, visitor screening and check-ins at lobby and reception areas

### Specifications

#### Display

- > Multi-Touch Display
- > LED 27"
- > 1080p
- > 16:9
- > Capacitive Touch Screen

Software: DTEN OS

#### Camera System

- > 3 Camera Array
- > Horizontal Field of View (HFOV): 160 Degrees Combined

#### Audio System

- > 8-Microphone Array
- > Integrated Stereo Speakers
- > Acoustic Echo Cancellation
- > Automatic Gain Control (AGC)
- > Automatic Noise Reduction

#### Inputs & Outputs

- > HDMI Out x 1
- > HDMI In x 1
- > USB 3.0 x 2
- > 3.5-mm Audio Jack x 1
- > Microphone x 1
- > Ethernet LAN (RJ45) x 1

#### Network

- > Ethernet (RJ-45) 100 Mbps
- > Wi-Fi 802.11a/b/g/n, 802.11ac (2.4 and 5 GHz)
- > IPv4 Dynamic Host Configuration Protocol (DHCP)/ Static
- > HTTP/HTTPS Proxy Support





## DTEN MEET ME Pro



### All-In-One Personal Collaboration Device + BYOC (Bring your own Codec)

The new DTEN ME Pro allows Zoom users to leverage their existing PC or Mac to join colleagues and friends on virtually any video meeting platform. With DTEN Smart Connect, easily attach the DTEN ME Pro to any PC or Mac and instantly access DTEN's award-winning 8-element microphone array, integrated cameras, multi-touch screen and speakers during any video meeting or multimedia application.

- > DTEN Smart Connect enables camera, touchscreen, microphone and speaker systems for use with virtually any video meeting platform

Software: DTEN OS

#### Specifications

##### Display

- > Multi-Touch Display
- > LED 27"
- > 1080p
- > 16.9
- > Capacitive Touch Screen

##### Camera System

- > 3 Camera Array
- > Horizontal Field of View (HFOV): 160 Degrees Combined

##### Audio System

- > 8-Microphone Array
- > Integrated Stereo Speakers
- > Acoustic Echo Cancellation
- > Automatic Gain Control (AGC)
- > Automatic Noise Reduction

##### Network

- > Ethernet (RJ-45) 100 Mbps
- > Wi-Fi 802.11a/b/g/n, 802.11ac (2.4 and 5 GHz)
- > IPv4 Dynamic Host Configuration Protocol (DHCP)/ Static
- > HTTP/HTTPS Proxy Support

##### Inputs & Outputs

- > HDMI Out x 1
- > HDMI In x 1
- > USB 3.0 x 2
- > 3.5-mm Audio Jack x 1
- > Microphone x 1
- > Ethernet LAN (RJ45) x 1

## DTEN GO & MATE



### Bring Collaborative Touch to any Display

Turn any screen into an interactive Zoom screen, the GO is a high tech 4 HD camera array with 160 degree field of view and 12 element microphone array, that features acoustic echo cancellation, automatic noise reduction

and has crystal clear audio, its everything you need in the box, light-weight and set-up in minutes. The MATE allows for you to bring collaborative touch to any display, it's a light weight tablet that works like a dream with the GO.

### Specifications

#### Camera System

- > 1080p x 2 Side Cameras
- > 4K x 2 Center Cameras
- > Horizontal Field of View (HFOV): 160 Degrees Combined

#### Audio System

- > 12 Elements Microphone Array
- > Microphone Pickup Range 0-52ft
- > Acoustic Echo Cancellation
- > Automatic Gain Control (AGC)
- > Automatic Noise Reduction

#### Network

- > Ethernet (RJ-45) 100/1000 Mbps
- > Wi-Fi 802.11a/b/g/n, 802.11ac (2.4 and 5 GHz)
- > IPv4 Dynamic Host Configuration Protocol (DHCP)/ Static
- > HTTP/HTTPS Proxy Support

#### Inputs & Outputs

- > HDMI Out x 1
- > 3.5-mm Audio Jack x 1
- > Microphone x 1
- > Ethernet LAN (RJ45) x 1

## Solutions Comparison Chart

	DTEN D7	DTEN ON	Zoom for Home - DTEN ME
<b>Camera</b>	4k Camera	4k Camera	3x Camera Array
<b>Camera Angle</b>	Up to 120 Degrees (HoV)	Up to 120 Degrees (HoV)	Up to 160 Degrees (HoV)
<b>Microphone</b>	16-Element Array	16-Element Array	8-Element Array
<b>Screen Resolution</b>	4K UHD Display	4K UHD Display	HD Display
<b>Screen Size</b>	55"/75"/Dual 55"	55"	27"
<b>Audio</b>	Integrated Speakers	Integrated Speakers	Integrated Speakers
<b>Touch Screen</b>	Capacitive Touch	Capacitive Touch	Capacitive Touch
<b>Connectivity</b>	Wi-Fi & Ethernet LAN	Wi-Fi & Ethernet LAN	Wi-Fi & Ethernet LAN
<b>Operating System</b>	Windows IOT	DTEN OS	DTEN OS
<b>Inputs &amp; Outputs</b>	HDMI Out x 1 HDMI In x 1 USB 3.0 x 2 3.5mm Audio Jack x 1 Microphone x 1 Ethernet LAN (RJ45) x 1	HDMI In x 1 3.5mm Audio Jack x 1 Ethernet LAN (RJ45) x 1	HDMI In x 1 Ethernet LAN (RJ45) x 1
<b>Product Dimensions (H x W x D)</b>	49 x 30.5 x 2.13in (124.49 x 77.38 x 5.23 cm)	49 x 30.5 x 2.13in (124.49 x 77.38 x 5.23 cm)	24.25 x 15.4 x 4.1in (61.6 x 39.1 x 10.4 cm)
<b>Product Weight</b>	50.7 lb (23kg)	50.7 lb (23kg)	14.33lb (6.5kg)



Designing the Hybrid Workplace

## Zoom Rooms the Neat way

Neat Bar is a simple and elegant, compactly designed yet highly capable meeting room device. It's perfect for bringing superior-quality audio and video to your meeting, huddle or focus rooms for up to ten people. You can mount Neat Bar above or below one or two monitors. Neat Bar is a purpose-built device for Zoom and ships with their dedicated Neat Pad controller



which you can configure as a Zoom Rooms controller or scheduler. There is no PC required, so say goodbye to windows and ios updates on Monday morning. Add an optional second neat pad to your purchase and configure it as a scheduler to take your conference room mojo up a notch.

## Neat Bar



1



### Video Features:

- > 4x digital zoom
- > 4056\*3040 (12mp) capture resolution
- > 120 degrees horizontal field of view
- > People video resolution: Up to 1080p / 30fps
- > Content video resolution: 720p / 60 fps, 1080p / 30fps
- > Hardware accelerated video encode and decode
- > Automatic people framing

### Audio Features:

- > 3 sensor mics
- > 5 microphones angled in an end-fire array
- > Dedicated wide-angle ultrasonic tweeter
- > Beamforming
- > Echo cancellation
- > Noise suppression

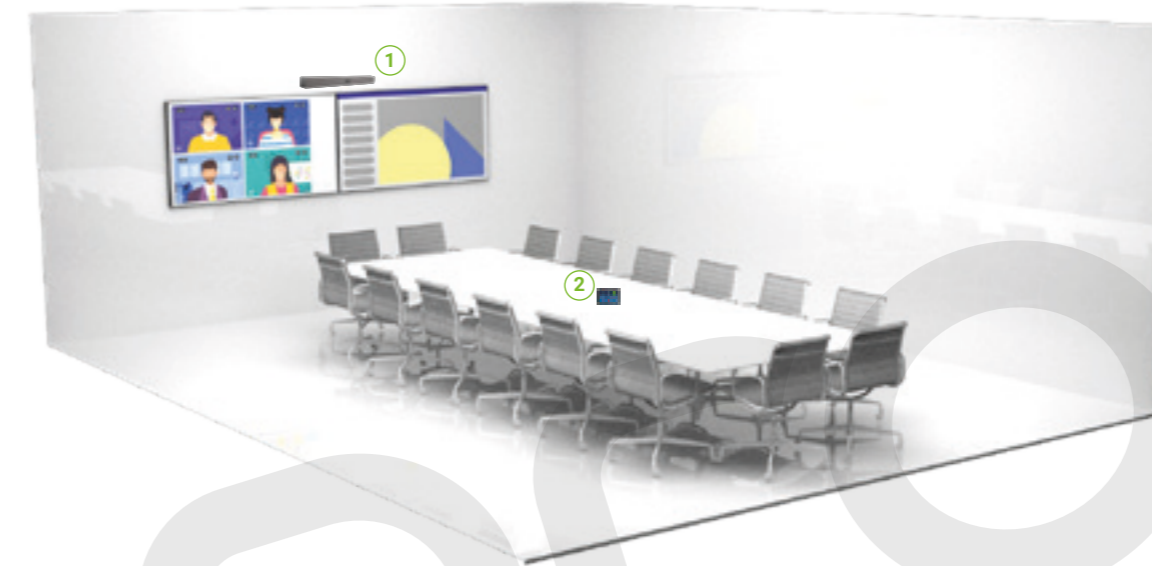
2



### Neat Pad:

- > 8-inch (diagonal) touch screen
- > Anti-glare, anti-smudge coating
- > 2 microphones
- > Wall mount & side mount
- > Zoom Rooms software
- > WiFi
- > Power over Ethernet (PoE) or powered by included power injector

## Neat Bar Pro



Neat Bar Pro packs a stack of tech into a simple and elegant device that is perfect for bringing superior-quality audio and video to any space, including your large meeting rooms. Capable of driving three large screens, it enables you to see people and content together more clearly. Simultaneously, its uncompromising audio and

video quality gives you an incredibly immersive, natural meeting experience throughout any space. Add the Neat Pad to provide a dedicated Zoom Rooms controller that doubles as a Scheduling display.

1



### Video Features:

- > Pro 100 MP camera system with wide and tele cameras
- > Wide camera: 50 MP, f/2.8 aperture, 113° horizontal field of view
- > Tele camera: 50 MP, f/1.8 aperture, 70° horizontal field of view
- > Hybrid zoom up to 16x
- > Hardware accelerated video encode and decode
- > Distortion correction
- > Noise reduction
- > Chromatic aberration correction
- > Automatic white balance and color correction
- > People video resolution: Up to 1080p / 30
- > Content video resolution: 720p / 60, 1080p / 30

### Audio Features:

- > Speakerbox for maximal tonal range with minimal distortion
- > 3 full-range speakers ready for directional and stereo sound
- > Woofers with two opposing drivers for vibration cancellation
- > 4 tracking mics
- > 16 microphones beamforming arrays
- > Hardware accelerated audio processing
- > Echo cancellation
- > Noise suppression
- > Automatic gain control
- > Dereverberation

2



### Neat Pad:

- > 8-inch (diagonal) touch screen
- > Anti-glare, anti-smudge coating
- > 2 microphones
- > Wall mount & side mount
- > Zoom Rooms software
- > WiFi
- > Power over Ethernet (PoE) or powered by included power injector

# Neat Board



## Zoom In One

Neat Board is the complete Zoom Rooms package in a sleek all-in-one device. With an immersive 65-inch multi-touch screen, powerful audio system, and versatile wide-angle camera, Neat Board ensures you see and hear everything beautifully. For a Zoom Rooms experience beyond video meetings and wireless content sharing, Neat Board enables annotations and whiteboarding, and comes with Neat marker, meaning you don't have to touch the screen with your fingers. Neat Board responds to your presence and automatically wakes up the moment you

walk in the room. Just one tap and you can wirelessly share your screen, start a meeting or mark something up. The large multi-touch screen is perfect for taking notes, organising thoughts and providing quick visual feedback, whether people are right there in the room or on video. What's more, you can add Neat Pad as a controller to start your meetings, hit mute and more without having to get up, or as a scheduler for optimal room management, taking your Neat Board system to a whole other level.

### Specifications

- > 65-inch capacitive multi-touch LED screen
- > Ultra HD 4K (3840 x 2160 screen resolution)
- > Anti-glare and anti-fingerprint coating
- > Camera LED
- > System LED
- > Ambient light sensor
- > Sensors for temperature, humidity, CO2 and VOC
- > 2 x Neat Marker (passive)
- > Table stand (included)
- > Floor stand (optional)
- > Wall mount (optional)
- > Neat Pad controller (optional)
- > Neat Pad scheduling display (optional)
- > Zoom Rooms for Touch software

### Video Features:

- > 4x digital zoom
- > Fixed lens, infinite focus
- > F-value: 2.8
- > 4056\*3040 (12 MP) capture resolution
- > 120 degrees horizontal field of view
- > Automatic people framing
- > Hardware accelerated video encode and decode
- > Distortion correction
- > Noise reduction
- > Chromatic aberration correction
- > Automatic white balance and colour correction
- > People video resolution: Up to 1080p / 30
- > Content video resolution: 720p / 60, 1080p / 30

### Audio Features:

- > Speaker box for maximum tonal range with minimal distortion
- > Opposing drivers for vibration cancellation
- > Dedicated wide-angle ultrasonic tweeter
- > 3 sensor mics
- > 5 microphones angled in an end-fire array
- > Hardware-accelerated audio processing (NAP)
- > Beamforming
- > Echo cancellation
- > Noise suppression
- > Automatic gain control
- > Dereverberation



# Neat Pad



## One Touch. Two Roles

Neat Pad is a simple and elegant touch screen you can use as a controller inside any meeting room or scheduling display outside any meeting room. With its sleek design, including ideal screen angle for smooth interaction and viewing, Neat Pad

beautifully blends in anywhere, whether placed on a table, wall or mullion. Thanks to just one Power over Ethernet cable, Neat Pad never runs out of battery either. It's always on, ready for you to leap into action.

### Specifications

- > 8-inch (diagonal) touch screen
- > 1280 x 800 screen resolution
- > Anti glare, anti smudge coating
- > Ambient light sensor
- > Sensors for temperature, humidity, CO2 and VOC
- > Side LED Indicators
- > Speakers for ultrasound
- > 2 microphones
- > Accelerometer
- > Wall mount and side mount
- > Kensington lock
- > Zoom Rooms software

### Security:

- > Secure boot
- > The Zoom Rooms app is secured with App Lock Code

### Networking & Ports:

- > WiFi
- > USB-C (reserved for future use)
- > Ethernet (supports PoE)
- > Power adapter for AC (optional)

## Neat Market Differentiators

### Neat Sense

Built-in sensors provide real time monitoring of room usage and the quality and health of the environment, centering on well-being and optimal room utilisation. The data is viewed on the Zoom dashboard, on Neat Pad Controller and Neat Pad Controller and on Neat Pad Scheduling display.

- > Occupancy Sensors
- > Temperature Sensors
- > Air quality, humidity, CO2 and VOC
- > People count

### Neat Pad

A purpose-built touch screen that serves as a power in-room controller for any Zoom Room and a scheduling display outside of a meeting space. Integration with Alexa for Business enables a contactless alternative for meeting controls.

### Neat Symmetry\*

This pioneering technology offers meeting equity and enables remote participants to see everyone in the meeting room equally and up close, regardless of who's speaking. It combines advanced AI with a high-resolution sensor to zoom in and individually auto frame each person in the room, instinctively following them if they shift positions, stand up or move around. As a result, everyone is always seen and heard.

*\*patent pending*

### Neat Bubble\*

Another pioneering technology, a set of audio capabilities suppress any unwanted background noise outside of the camera view. In other words, what you see is what you hear. Even when someone is sitting or standing far back in the room, if they are within sight, they can be clearly heard by all.

*\*patent pending*

### Neat as a Service (NaaS)

A global subscription service that gives customers the choice to access Neat devices with an OPEX-based option.





[www.proav.com](http://www.proav.com)  
[uc@proav.com](mailto:uc@proav.com)

**proav**®